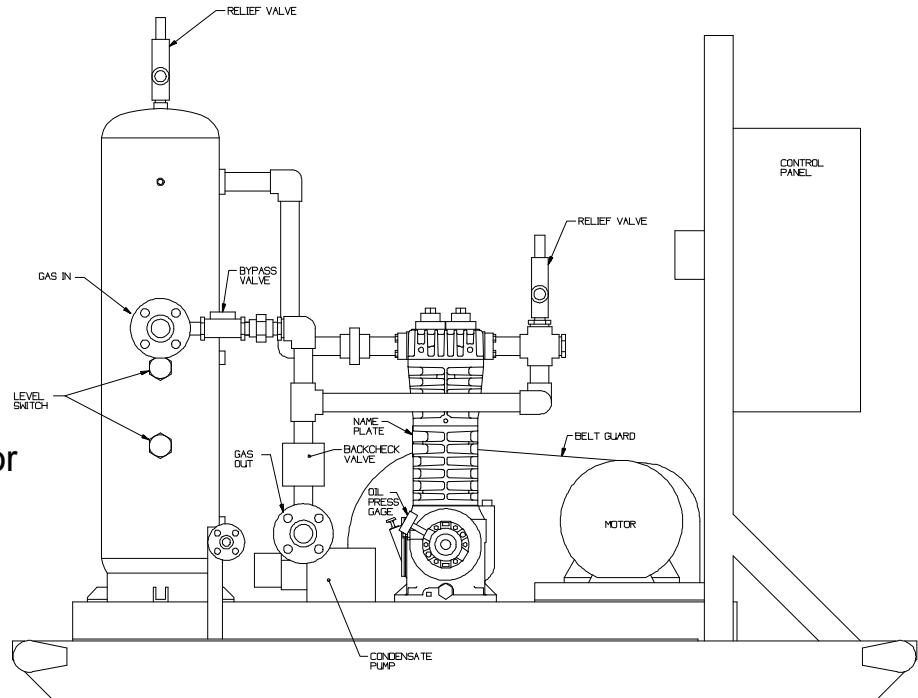


COMPRESSOR SOLUTIONS

HD361-TCZ
Natural Gas Compressor
driven @ 690 RPM



Gas:
Natural Gas
 $n = 1.27$
MW = 18.8

Inlet:
14.7 - 65 psia
(1.03 - 4.57 kg/cm²)
70°F (21°C)

Outlet:
50 - 215 psia
(3.5 - 15.1 kg/cm²)

COMPRESSOR CONSTRUCTION

PEEK Valve Plates

Buna-N O-rings

Ductile Iron

ACCESSORIES

ASME Code Liquid Trap
Two Float Switches
Three Pressure Gauges
Trap Condensate Pump
Two ASME Relief Valves

15 HP, EXP Motor
Three Pressure Switches
Temperature Switch
Gas Check Valve
ANSI Flanged Connections

NEMA 7 Control Panel
ByPass Valve
Bypass Solenoid Valve
Condensate Check Valve
Oilfield Type Skid

This HD361 is to be used in China for Natural Gas recovery from the wellhead. As the pressures will change from site to site, the suction and discharge pressure switches are field adjustable over a wide range. The unit will start compressing gas when the suction pressure rises above the switch setting. When the suction pressure falls to the low suction pressure setting, the bypass valve opens, allowing the compressor to idle until the suction pressure rises again. If the bypass operation continues for an extended time, the compressor motor is stopped until the suction pressure rises to the upper suction pressure limit again. The steel beam skid eliminates the need for a normal foundation and allows easy transport of the unit. All of the electrical devices are Explosion Proof NEMA 7 rated.