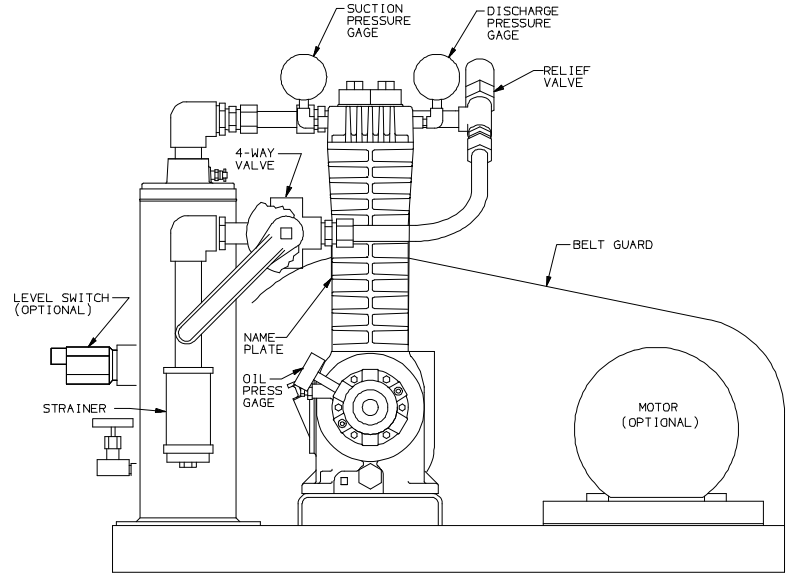


COMPRESSOR SOLUTIONS

LB161-LU
For Liquefied Gas Transfer and Vapor Recovery



GC1008

Gas	Propane C ₃ H ₈	Butane C ₄ H ₁₀	Anhydrous Ammonia NH ₃
MW	44.09	58.12	17.03
n Value	1.13	1.09	1.31
Vapor Pressure @ 40°F (4.4°C) @ 90°F (32.2°C)	63 psig (4.3 bar-g) 147 psig (10.1 bar-g)	3 psig (0.2 bar-g) 28 psig (1.9 bar-g)	56 psig (3.9 bar-g) 160 psig (11.0 bar-g)
Maximum Transfer Rate	80 - 100 gpm 300 - 380 lpm	40 - 70 gpm 150 - 265 lpm	80 to 100 gpm 300 - 380 lpm
Typical Driver Size	7.5 HP (5.5 kw)	5 HP (3.7 kw)	7.5 HP (5.5 kw)

Compressor Trim:

Ductile Iron Cylinder, Buna-N O-rings, Aluminum Gaskets

Driver:

Electric motor, Diesel Engine, Gasoline Engine, or LPG Engine

Accessories:

Liquid Trap with Mechanical Float, Suction Strainer, 4-Way Flow Control Valve, Discharge Relief Valve, Pressure Gauges for suction and discharge gas pressures and crankcase oil pressure.

The LB161-LU is used worldwide for quiet and efficient transfer of Propane, Butane and Anhydrous Ammonia. The LB161 features a Ductile Iron head and cylinder for superior strength. The -LU mounting includes a liquid trap to prevent entry of liquid into the compressor and a 4-way flow control valve which allows vapors to be recovered after all the liquid has been transferred. Available options include pressure switches, temperature switches, trap liquid level switches, electric motors or engine drivers, and electrical control panels.