

COMPRESSOR SOLUTIONS

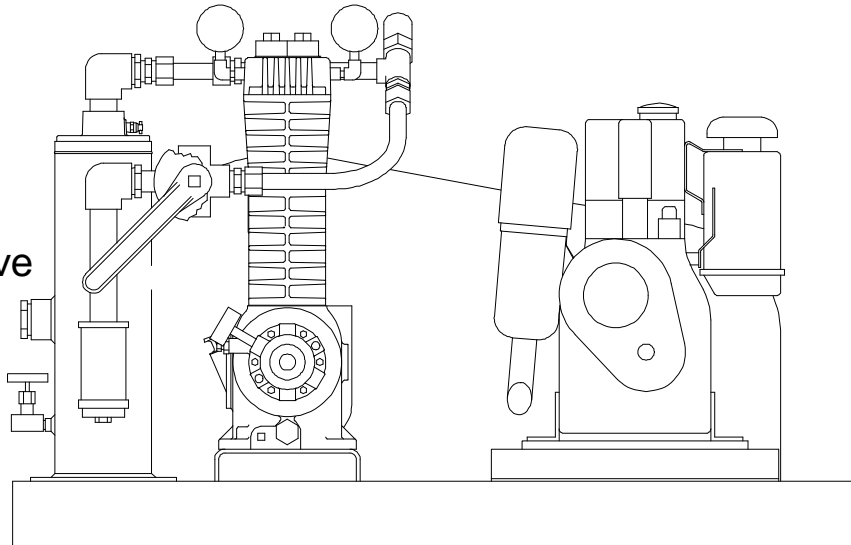
LB161-LU

LPG Compressor with
HATZ E79 Engine Drive

Gas:

Propane

n=1.13 MW=44.1



Inlet: 63 - 200 psig
(4.4 - 14.1 kg/cm²g)
Ambient Temperature

Outlet: 75 - 225 psig^{AE92-99089-1}
(5.3 - 15.8 kg/cm²g)

COMPRESSOR TRIM and ACCESSORIES

Ductile Iron Cylinder

Buna-N O-rings

Aluminum Gaskets

Suction Strainer

Discharge Relief Valve

Oil Pressure Gauge

Liquid Trap with
Mechanical Float

Suction and Discharge
Pressure Gauges

4-Way Flow Control
Valve

DRIVER

Hatz E79 Diesel engine with crank start, clutch and spark arresting muffler.

After being shown at the World LPG Forum in Marrakech, this LB161 is to see duty as a portable LPG transfer compressor in Morocco.

Since the unit is engine driven, it can be easily transported to a remote site. There it can be used to 'empty' a tank prior to moving it over public roads. It can also be used to empty vessels involved in an accident. If a liquid opening is available, the liquid may be pushed out into a bobtail or transport truck via the differential pressure method. Once the tank is emptied of liquid, the 4-way valve is reversed and the vapors are recovered.