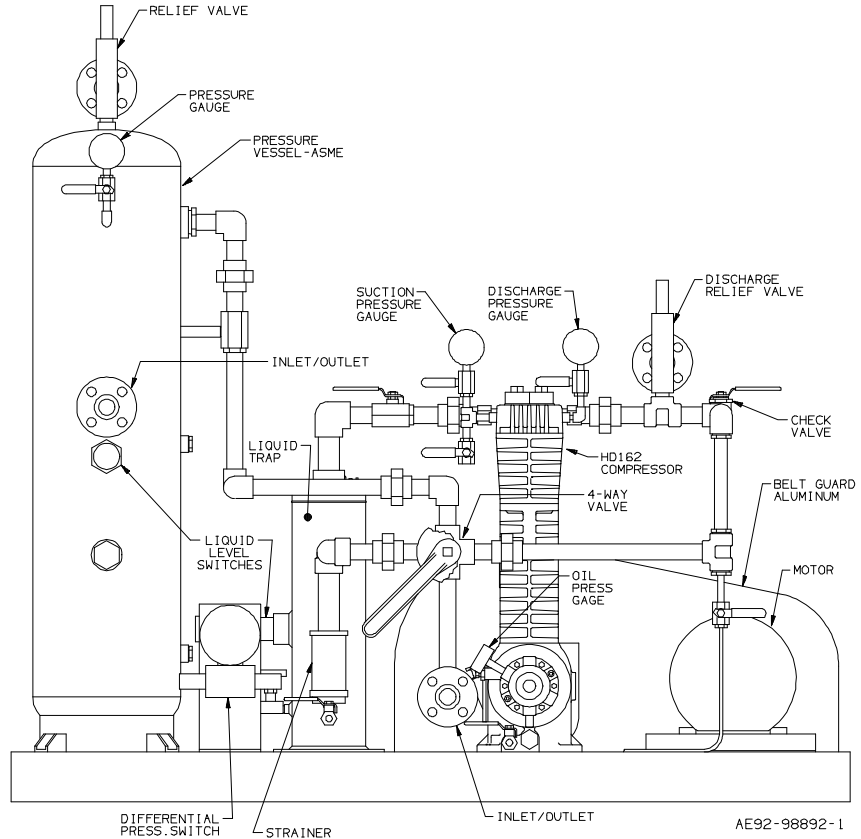


COMPRESSOR SOLUTIONS

HD162-LUZ
LPG Vapor Recovery
Compressor
Driven @ 360 RPM

GAS: Propane & Butane
n = 1.07
MW = 57.0



INLET: 44 - 85 PSIG (3.0 - 5.9 BAR-G), Ambient Temperature

OUTLET: 57 - 170 PSIG (3.9 - 12 BAR-G)

COMPRESSOR CONSTRUCTION

PTFE/Nickel Treated
Valves

Buna-N O-rings

Ductile Iron
Head and Cylinder

ACCESSORIES

3 HP EXP Motor
V-belt Drive
Mechanical Liquid Trap
ASME Code Liquid Trap

ASME Code Relief Valves
Interconnecting Piping
4-Way Valve
Differential Pressure Switch

Flanged Connections
Liquid Level Switches
Check Valve
Aluminum Beltguard

This HD162-LUZ compressor package is being used in China to recover LPG vapors. A differential pressure switch signals the end of the vapor recovery process. The larger ASME code liquid trap includes a stainless steel mist pad, drain valve, and ASME relief valve. The other is a mechanical liquid trap with internal float and drain valve. Liquid level switches signal high liquid level in either liquid trap. Isolation valves are provided on the pressure gauges, pressure switch, ASME liquid trap, and the compressor to eliminate the need to vent the entire system if one component should need service. The motor and all switches are explosion proof. The aluminum belt guard eliminates the possibility of sparking between the flywheel and guard.