

## FLOAT SWITCH

Part No. 790267, Option No. 777836: Plastic Float, 0.5 specific gravity

Part No. 790259, Option No. 777838: Stainless Steel Float, 0.65 specific gravity

An electrical float switch to activate alarms and/or shut-down equipment when a liquid rises high enough to set the snap-switch.

The switch must be mounted horizontally through a 1½" NPT half coupling.

Body/Cover: Electroless Nickel Plated Steel

O-rings: Fluorocarbon (FKM)

Housing: Explosion Proof CSA Listed

Class I Groups C & D Div. 1

Switch: SPDT 5A @ 125 - 480 VAC

½A 125 VDC, ¼A 250 VDC

2A Resistive 30 VDC,

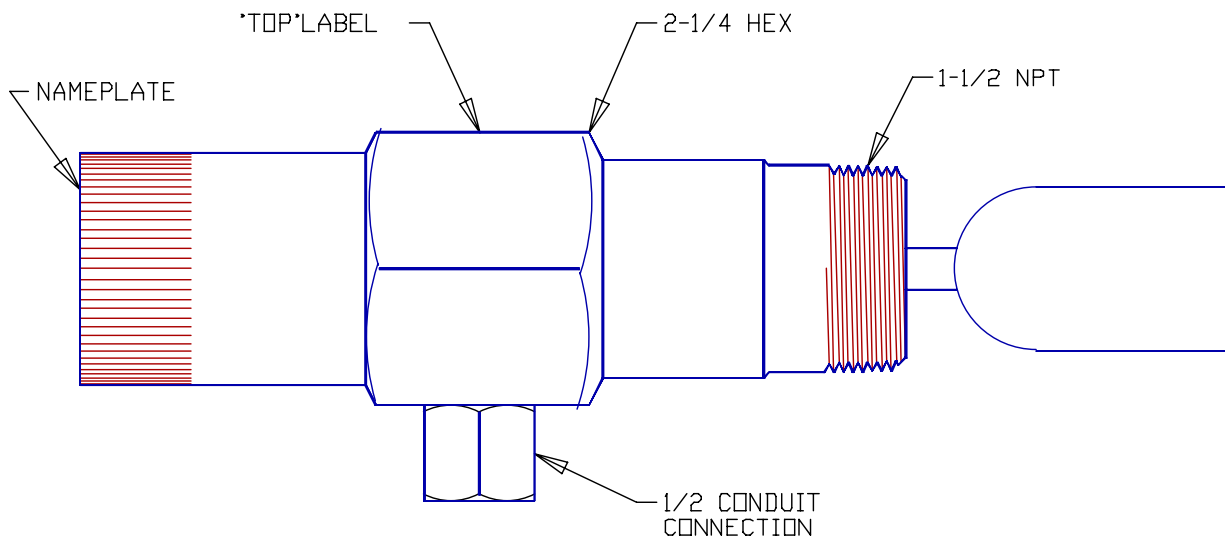
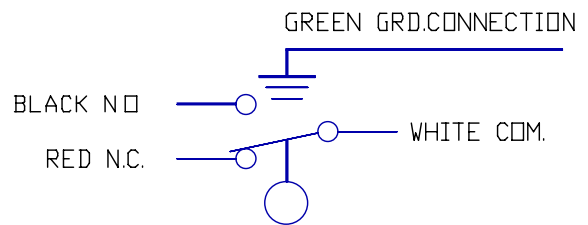
1A Inductive 30 VDC

Pressure, Max.: 1,500 psi, 103 bar

Temperature, Max.: 300°F, 149°C

Approx. Weight: 6 lb., 2.7 kg

### WIRING DIAGRAM



# FLOAT SWITCH

Part No. 790017, Option No. 777837: Stainless Steel Float, 0.4 specific gravity

An electrical float switch to activate alarms and/or shut-down equipment when a liquid rises (or falls) past the switch. Electric switching action is provided by the float moving a magnet into the field of an hermetically sealed reed switch capsule.

The switch must be mounted in a horizontal position through a 1½" NPT **half coupling only**. The switch may be mounted for either high or low liquid level signal by rotating the switch body to the proper position (see diagrams below).

**Float:** 316 Stainless Steel

**Body:** 303 Stainless Steel

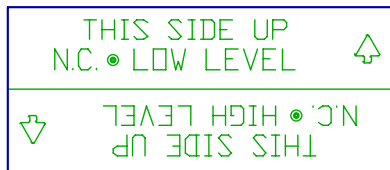
**Housing:** Explosion Proof  
 CSA Listed  
 Class I, Groups A, B, C & D  
 Divisions 1 & 2

**Switch:** SPST, Max. 1 amp @ 110VAC  
 or 3 amp @ 28 VDC (resistive)

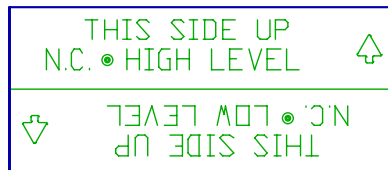
**Pressure, Max.:** 1,500 psi, 103 bar

**Temperatures:** -40° to 400°F,  
 -40° to 204°C

**Approx. Weight:** 3.5 lb., 1.6 kg

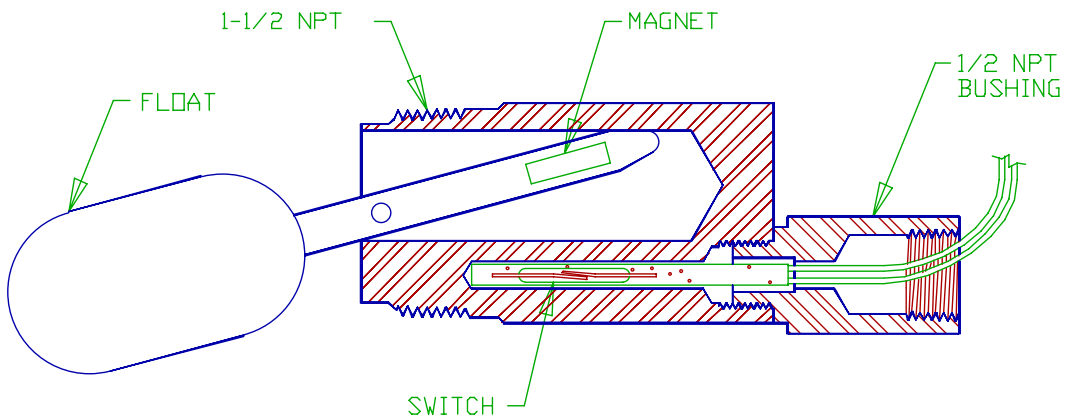


NAMEPLATE POSITION FOR LOW LEVEL ALARM



NAMEPLATE POSITION FOR HIGH LEVEL ALARM

NOTE: NC - INDICATES CIRCUIT IS CLOSED



PB1025A