

COMPRESSOR SOLUTIONS

HD373-TCZ Evacuation Compressor driven @ 695 RPM

Gas: Chlorodifluoromethane (R22) $n = 1.18$ MW = 86.5

Inlet: 14.5 - 45 psia (1.03 - 3.16 kg/cm²) at 50°F (10°C)

Outlet: 195 psia (13.7 kg/cm²)

COMPRESSOR OPTIONS

| | | |
|-------------------------|---------------------------|-------------------------------------|
| SS Valves | PTFE/Nickel Treatment | PTFE O-rings |
| Suction Valve Unloaders | Triple Rod Seals | External Oil Filter |
| ASME Code Liquid Trap | 10 HP, TEFC-SD Motor | N ₂ Purged NEMA 4X Panel |
| Two Float Switches | Four Pressure Switches | Epoxy Paint System |
| Five Pressure Gauges | Temperature Switch | PVC Coated Conduit |
| Temperature Gauge | Nickel Plated Intercooler | N ₂ Distance Piece Purge |
| Two ASME Relief Valves | SS Beltguard | Unloader Solenoid Valve |

Two of these Two-Stage HD373 Triple-Seal Compressors are being used in Puerto Rico to recover R22 Refrigerant. Release of any CFC (Such as R22) to the atmosphere is being strictly controlled in an effort to protect the earth's ozone layer. Blackmer compressors are of the proper type and size for a wide range of refrigerant transfer and recovery applications. These particular compressors are handling a contaminated product in a corrosive atmosphere necessitating the use of the corrosion resistant options listed above.

HD372-TC Sulfur Hexafluoride (SF₆) Recovery Compressor Driven @ 450 RPM

Gas: SF₆ $n = 1.09$ MW = 146.1

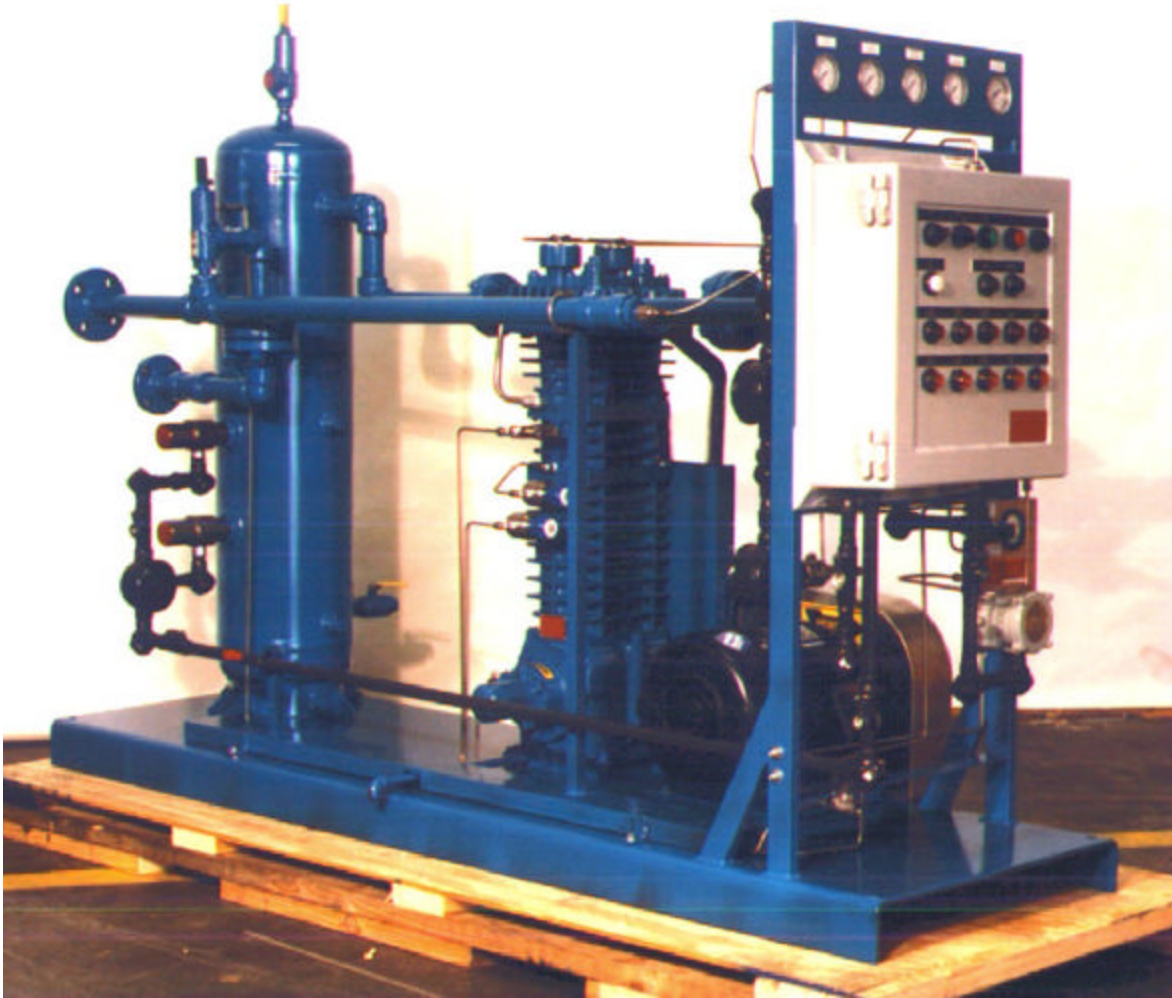
Inlet: 65 - 19 PSIA (4.5 - 1.3 BAR-A) at Ambient Temperature

Outlet: 465 PSIA (32 BAR-A)

COMPRESSOR OPTIONS

| | | |
|-------------------------|-------------------------|-----------------------|
| PEEK Valve Plates | Temperature Switch | External Oil Filter |
| NEMA 4 Control Panel | Water-Cooled Condenser | Check Valve |
| 10 HP TEFC Motor | ASME Code Relief Valves | Pressure Switches |
| Suction Valve Unloaders | Unloader Solenoid Valve | Liquid Level Switch |
| ASME Code Liquid Trap | | Structural Steel Skid |

SF₆ is used to insulate the high voltage components inside a pressurized enclosure. While not especially hazardous, SF₆ is rather expensive. This HD372-TC compressor package is used to recover the SF₆ into a temporary storage tank. The enclosure may then be opened to allow maintenance/inspection. The compressor then transfers the SF₆ back to the enclosure. The HD372A-TC package includes a liquid trap to protect the compressor. The condenser allows the product to be stored as a liquid rather than a gas to minimize pressure buildup and the space required.



PX911220, 8A

