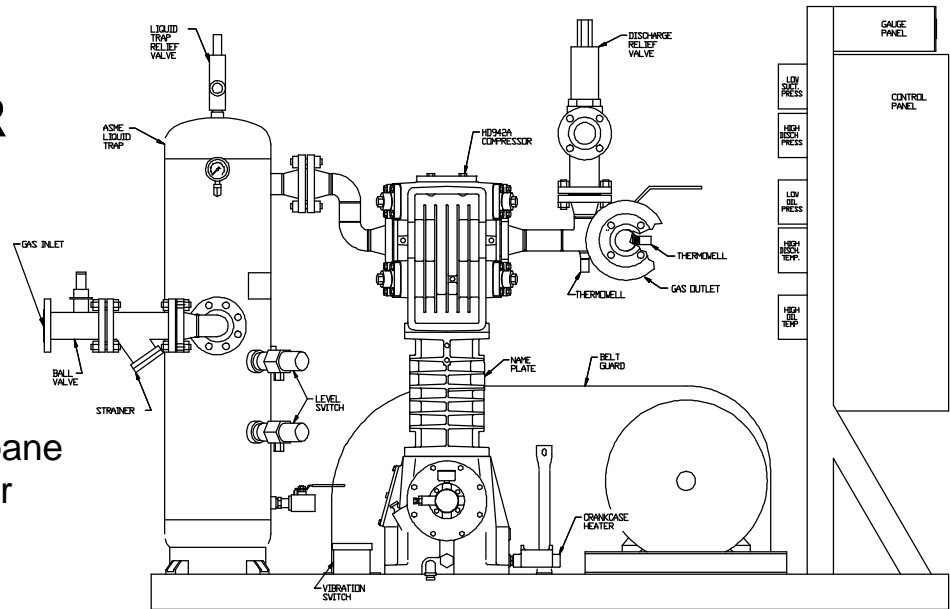


COMPRESSOR SOLUTIONS

HD942-TC

Natural Gas and Propane
Recovery Compressor
Driven @ 655 RPM



AE94-J580245-1

Gas: Propane (n= 1.13, MW = 44.09)
Natural Gas (n = 1.27, MW = 18.8)
Inlet: 20 - 90 psia (1.4 - 6.3 kg/cm² a) at ambient temperatures.
Outlet: 95 - 165 psia (6.7 - 11.6 kg/cm² a)

FEATURES

Stainless Steel Valves	Suction Strainer	ASME Code Liquid Trap
Oil Pressure Switch	High Vibration Switch	Crankcase Oil Heater
Trap and Discharge Relief Valves	40 HP, 60 Hz Explosion Proof Motor	Two High Liquid Level Switches
Pressure and Temperature Gauges	Low Suction Pressure Switch	High Discharge Temperature Switch
Starter/Control Panel	Shutoff Ball Valves	Discharge Check Valve

Two model HD942-TC compressors are being used in Pennsylvania to recover natural gas from 30,000 gal. (115 m³) vessels when refilling them with propane. Pressure, Temperature, Liquid Level and Vibration switches monitor almost every aspect of the compressors' operation. Crankcase Oil Heaters ensure proper lubrication year around, and the control panel features fail safe circuits. The Discharge Check Valve, and Shutoff Ball Valves allow the compressor to be easily isolated from the rest of the system as needed.