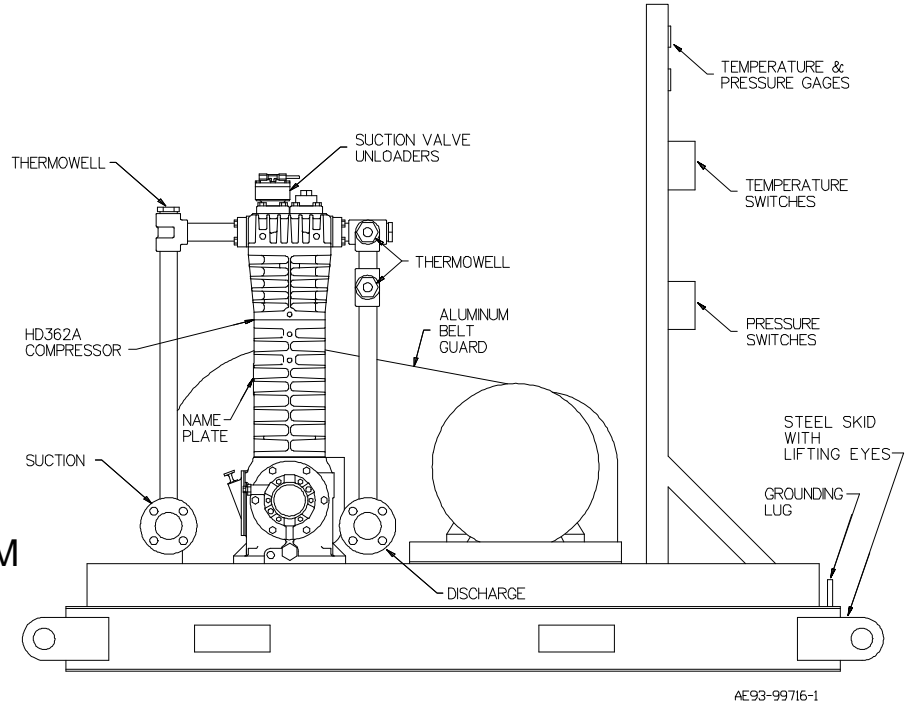


COMPRESSOR SOLUTIONS

HD362-B
 Nitrogen Booster
 Compressor
 driven @ 353 or 705 RPM



Gas:

Nitrogen
 $n = 1.40$
 MW = 28.01

Inlet:

50 psia
 (3.5 kg/cm² a)
 100°F (38°C)

Outlet:

140 - 165 psia
 (9.8 - 11.6 kg/cm² a)

COMPRESSOR CONSTRUCTION

TNT-12 PTFE/Nickel
 Treated Cylinder

Poly Filled
 Piston Rings

Stainless Steel
 Suction Valve Unloaders

ACCESSORIES

Stainless Steel Beltguard
 Flanged Connections
 External Oil Filter

Two Speed Motor
 Structural Steel Skid
 Control Pressure Switch

Low Oil Pressure Switch
 Temperature Switches
 Temperature Gauges

This HD362 supplies nitrogen to a petrochemical process in West Virginia. To meet a very occasional demand for twice the normal nitrogen capacity, a two speed motor was specified. Nitrogen is a very dry gas with no lubrication qualities, so the TNT-12 treated cylinder and Poly Filled Piston Rings were chosen to maximize piston ring life.