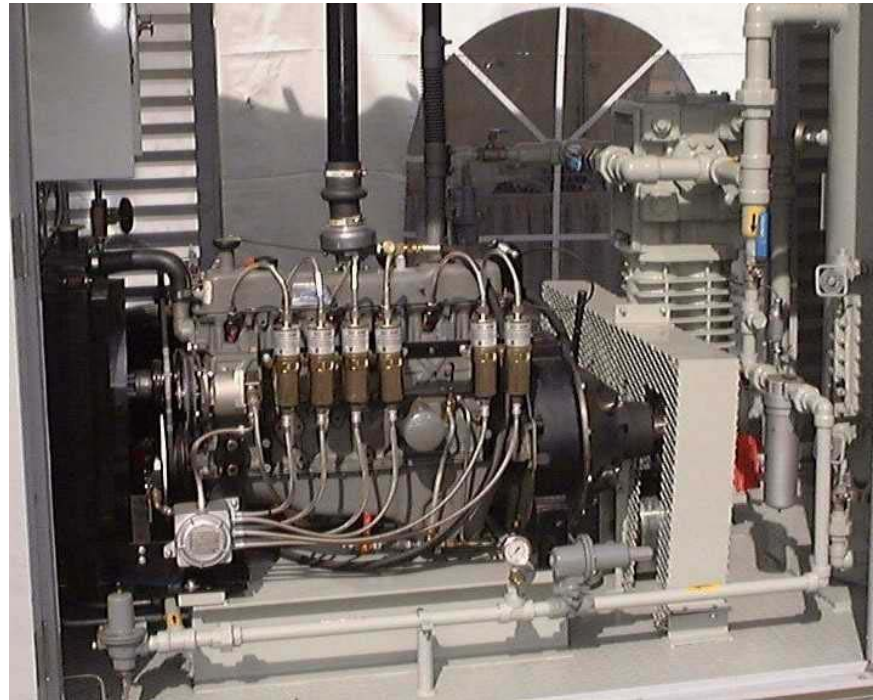


## COMPRESSOR SOLUTIONS

### HD942A-CO

Compressor Package for  
Natural Gas Boosting  
Engine driven

**Gas:**

Well Head Natural Gas  
 $n = 1.26$   
MW = 16.04

**Inlet:**

50 psig  
(3.5 kg/cm<sup>2</sup> g)  
-45F to 90°F (-43C to 32C)

**Outlet:**

200 psig  
(14.1 kg/cm<sup>2</sup> g)

### COMPRESSOR CONSTRUCTION

Air Cooled single stage  
ANSI flanged  
Construction

Buna-N  
O-rings

Ductile Iron  
Head and Cylinder

### ACCESSORIES

Ford 300 Engine  
ASME Code Liquid Trap  
Liquid Level Controls and  
Pressure Safety Valves

Safety Switches and  
Controls for unattended fully  
automated operation

Fully enclosed Building  
Access doors on both sides  
Explosion proof building  
heater

This HD942 is being used in Western Alberta Canada to boost gas pressure from two gas wells at 500MCFD. The compressor features two sets of rod seals on each piston rod separated by a distance piece to minimize leakage and product contamination. The Package is fully instrumented and automated for unattended operation. Packaged by Blackmer Distributor: PC Compression.