

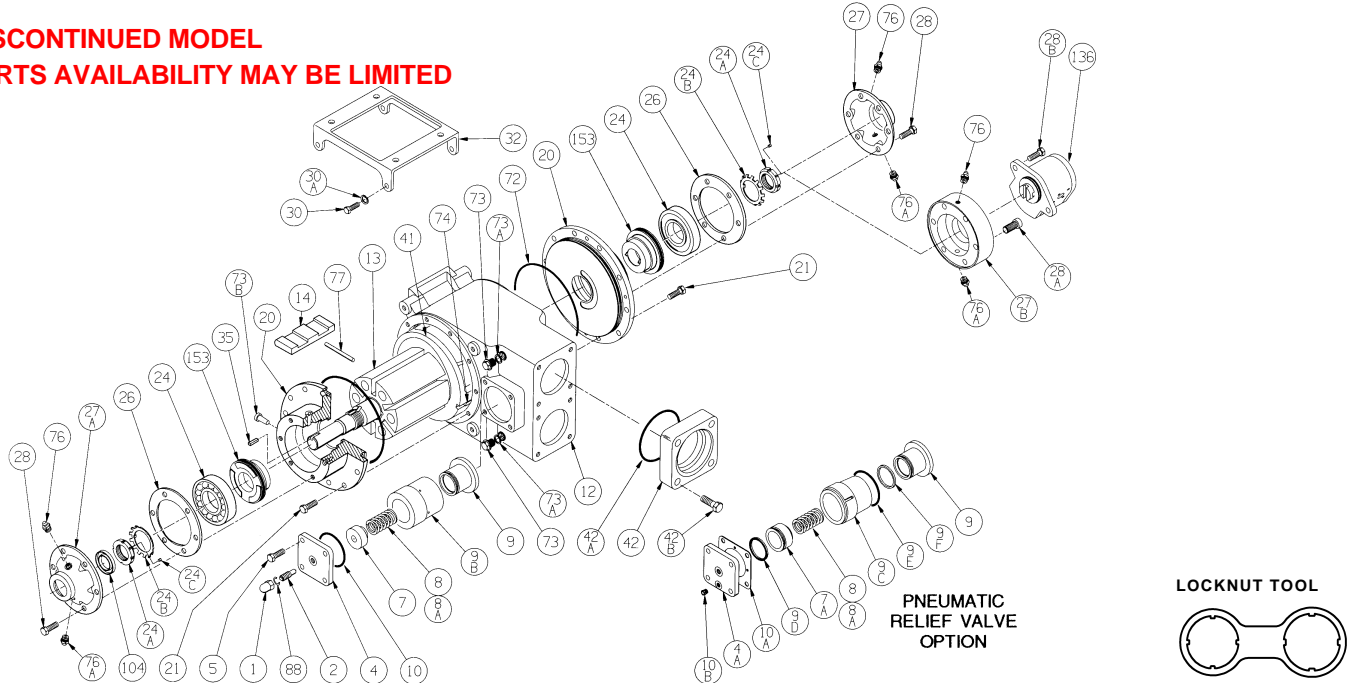
# BLACKMER PARTS LIST

## PUMP MODEL: ATX300

(See Instructions 201A-A00 for Installation, Operation and Maintenance)

Section 200  
Effective July 2002  
Replaces June 2002

**DISCONTINUED MODEL**  
**PARTS AVAILABILITY MAY BE LIMITED**



Ref. No.	Description	Parts Per Pump	Part No.	Ref. No.	Description	Parts Per Pump	Part No.
1	Cap - R/V (Std)	1	411452	27	Bearing Cover - Outboard	0 - 1	042227
2	Adjusting Screw - R/V (Std)	1	431800	27A	Bearing Cover - Inboard	1	042225
4	Cover - R/V (Std)*	1	411800	27B	Adapter - Hydraulic Pump	0 - 1	041805
4A	Cover - R/V (AIR)	1	411801	28	Capscrews - Bearing Cover	6 - 12	920127
5	Capscrews - R/V Cover (Std, AIR)	4	920199	28A	Capscrews - Adapter	0 - 6	924049
7	Spring Guide - R/V (Std)*	1	425101	28B	Capscrews - Hydraulic Pump	0 - 2	920199
7A	Spring Guide - R/V (AIR)	1	425102	30	Capscrews - Mounting Bracket	4	924064
8	Spring - R/V (3.9-5.2 bar) (Std, AIR) <sup>1</sup>	1	471621	30A	Lockwasher - Bracket Capscrews	4	909586
8A	Spring - R/V (5.2-8.6 bar)* (Std, AIR) <sup>2</sup>	1	471614	32	Mounting Bracket	1	831800
9	Valve - R/V (Std, AIR)	1	455104	35	Key - Shaft	1	909146
9B	Valve Guide - R/V (Std)*	1	425103	41	Liner - ATX300	1	181803
9C	Valve Guide - R/V (AIR)	1	425104	42	Flange - 80mm Weld (Aluminum)	0 - 2	651820
9D	Seal - Spring Guide (AIR)	0 - 1	495025		Flange - 80mm Weld (Cast Steel)	0 - 2	651819
9E	O-Ring - Valve Guide (AIR) (Buna-N)	0 - 1	701939	42A	O-Ring - Flange (Buna-N)	0 - 2	702002
9F	Seal - Valve (AIR)	0 - 1	495023		O-Ring - Flange (PTFE)	0 - 2	702080
10	O-Ring - R/V Cover (Std) (Buna-N)*	1	702014	42B	Capscrews - Flange	0 - 8	924086
	O-Ring - R/V Cover (Std) (PTFE)	1	702224	72	O-Ring - Head (Buna-N)*	2	702122
10A	Gasket - R/V Cover (AIR)	0 - 1	537300		O-Ring - Head (PTFE)	2	702235
10B	Breather Vent - R/V Cover (AIR)	0 - 1	495024	73	Gage Plug	2	908191
12	Casing	1	011800	73A	Gasket - Gage Plug	2	381818
13	Rotor & Shaft (Straight Key)	1	261871	73B	Plug - Weep Hole	4	340000
14	Vane - Duravane	6	094500	74	Key - Liner	1	185191
20	Head	2	031826	76	Grease Fitting	2	317815
21	Capscrews - Head	20	920199	76A	Grease Relief Fitting	2	701992
24	Ball Bearing	2	903172	77	Push Rod - ATX300	3	121810
24A	Locknut - Ball Bearing	2	903582	88	Gasket - R/V Cap	1	701981
24B	Lockwasher - Ball Bearing	2	903524	104	Grease Seal	1	331908
24C	Setscrew - Locknut	2	924060		Hydraulic Pump <sup>3</sup> (8 cc/rev.)	0 - 1	889610
26	Gasket - Bearing Cover	2	385125		Hydraulic Pump <sup>3</sup> (11 cc/rev.)	0 - 1	889612
					Tool - Locknut		903091

<sup>1</sup> For Pneumatic Relief Valve (AIR), spring p/n 471621 is 5.2 bar (75 psi) and non-adjustable. STD = Standard Direct Acting Relief Valve.  
<sup>2</sup> For Pneumatic Relief Valve (AIR), spring p/n 471614 is 7.9 bar (115 psi) and non-adjustable. AIR = Optional Pneumatic Actuated Relief Valve.  
<sup>3</sup> For hose reel drive. \* = Standard on pump.

Keep this parts list should be kept with Installation, Operation and Maintenance Instructions

**MECHANICAL SEAL - OPTIONAL**

Ref. No.	Description	Parts Per Pump	Part No.
153	Mechanical Seal Complete - Cast Iron Stationary Seat, Carbon Seal Face, Buna-N O-Rings. *	2	331880
	Mechanical Seal Complete - Cast Iron Stationary Seat, PTFE O-Ring, Carbon Seal Face w/ PTFE Seal Ring.		331873
153D	O-Ring – Stationary (Buna-N)	2	701936
	O-Ring – Stationary (PTFE)		702080
153L	O-Ring – Rotating (Buna-N)	2	711912
	Seal Ring – Rotating (PTFE)		**

\* Standard on pump

\*\* PTFE Rotating Seal Ring is not available as a separate part.

