

# BLACKMER PUMP PARTS LIST

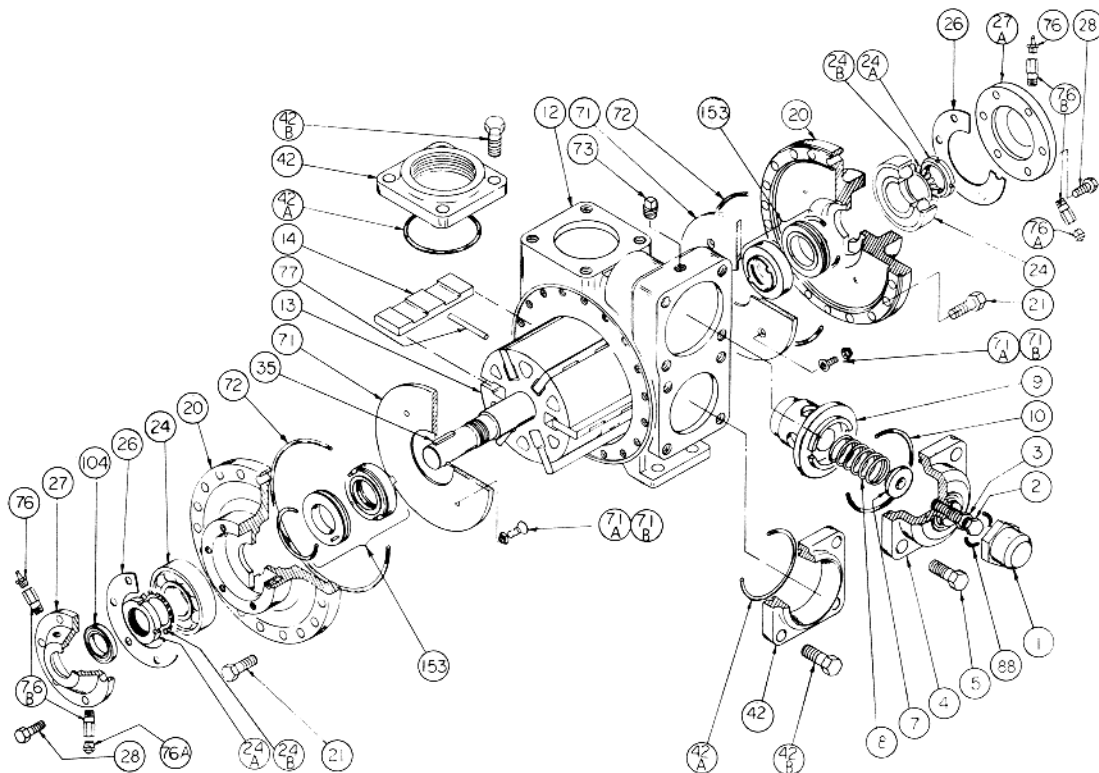
## MODEL: RA4C-N

(For Operating and Maintenance Instruction See Page 485/G)

960434  
PARTS LIST NO. 485/G1

Section Effective Replaces	400 November 1984 November 1982
----------------------------	---------------------------------------

*These models are obsolete.  
Parts availability will be limited.*



REF. NO.	PART NAME	NO. PARTS PER PUMP	PART NO.	REF. NO.	PART NAME	NO. PARTS PER PUMP	PART NO.
1	Valve Cap	1	413952	42	Flange, 3" NPT	1-2	652001
2	Adjusting Screw	1	436310		Flange, 3" Weld		652007
3	Locknut	1	436355		Flange, 4" Weld		652005
4	Valve Cover	1	412001	42A	"O" Ring, Flange	2	#702011
5	Cover Capscrew	4	920663	42B	Flange Capscrew	8	920640
7	Spring Guide	1	426355	71	Disc	2	062003
8	Valve Spring	1	476304	71A	Disc Machine Screw	8	920007
9	Relief Valve	1	452001	71B	Disc Lockwasher	8	909622
10	"O" Ring, Valve Cover	1	#702012	72	"O" Ring, Head	2	#702013
12	Cylinder	1	022000	73	Gage Plug	2	908195
13	Rotor & Shaft	1	262018	76	Grease Fitting	2	317815
14	Vane-Duravane	6	092019	76A	Grease Relief Fitting	2	701992
	Vane-Laminate	6	092026	76B	Extension	4	701905
20	Head	2	032007	77	Push Rod	3	122001
21	Head Capscrew	36	920532	88	"O" Ring - Valve Cap	1	#711986
24	Bearing	2	903172	104	Grease Seal	1	#331908
24A	Bearing Locknut	2	903523	<b>Gasket Repair Kit</b>			<b>892029</b>
24B	Bearing Lockwasher	2	903524	<b>#Parts included in Gasket Repair Kit</b>			
26	Bearing Cover Gasket	2	#385125				
27	Bearing Cover-inboard	1	041815				
27A	Bearing Cover-outboard	1	041817				
28	Bearing Cover Capscrew	12	920286				
35	Shaft Key	1	909183				

**PARTS LIST NO. 485/G2**

**MECHANICAL SEAL — STANDARD**

REF. NO.	PART NAME	NO. PARTS PER PUMP	PART NO.
153	Mechanical Seal Assembly	2	332057
153A	Stationary Seat, Ceramic	2	332047
153B	Seal Face, Carbon	2	332056
153C	Seal Jacket Assembly	2	332046
153D	O-Ring, Neoprene	2	702009
153E	O-Ring, Neoprene	2	702007
153F	Back-Up Ring	2	332044

